



## Product Overview

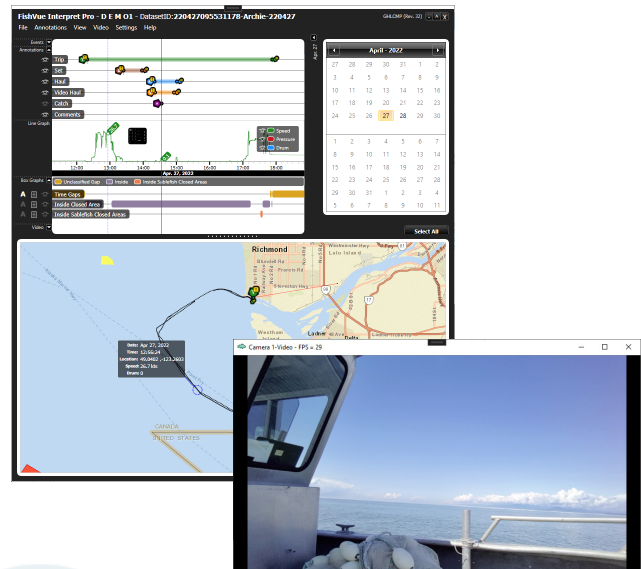
FishVue Interpret (formerly known as EM Interpret) is widely accepted as the most trusted and proven EM data review tool in the world.

An at-sea electronic monitoring system produces a lot of data to sort, manage, and review; that's why Archipelago created the FishVue Interpret software as a companion to the Archipelago® EM Observe electronic monitoring system and Marine Instruments Marine Observe. With FishVue Interpret v2.2, reviewers can quickly follow vessel cruise tracks, verify gear deployment times and locations, and confirm “kept and discarded” catch records.

Each application is custom configured to suit your specific fishery, gear type, and regional requirements (including local maps and no-fish zones). To accommodate the varied needs of EM reviewers and EM system technicians, FishVue Interpret is available in two versions: FishVue Interpret Pro and FishVue Interpret Lite.

It is utilized to review more EM fishing days per year than any other data review application in the world.

- In 2021, it was utilized to review more than 20,000 sea days of fishing activity.
- In the last decade, FishVue Interpret has been utilized to:
  - Review more than 50,000 fishing trips across dozens of fisheries and multiple gear types
  - Annotate more than half a million fishing events



## FishVue Interpret Pro

FishVue Interpret Pro streamlines the review process, transforming months of sensor and video data into a clear and accurate assessment of fishing activity at sea. Click between GPS, video, and sensor data at any point; EM Interpret Pro synchronizes all data along a single timeline for easy reference.

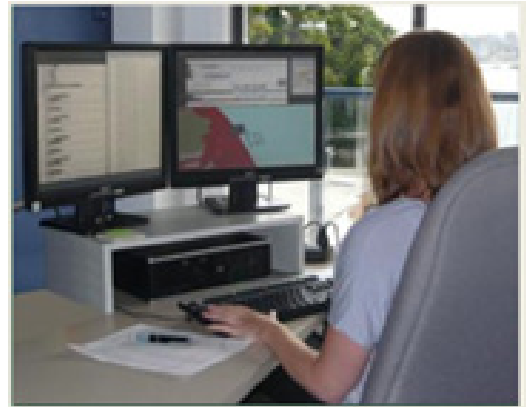
Designed for professional fisheries reviewers and researchers, FishVue Interpret Pro includes powerful data management and annotation features. Efficiently navigate weeks of fishing records to quickly spot relevant activities, add your own annotations, save video excerpts, and generate trip summaries for further analysis, reporting, or integration into a sustainable fisheries management program.

## FishVue Interpret Lite

For those who need fast access to EM data, but don't need to save or view annotations, Archipelago created FishVue Interpret Lite. Designed for quick, easy access in the office or at the dock, FishVue Interpret Lite provides a powerful reference tool for fisheries officers, program managers, field technicians, scientists, and researchers.

Optimized for laptop or standard workstation PC, FishVue Interpret Lite offers a choice of viewing modes: standard mode highlights key fishing activity (including sensor, video, and cruise track data), while technician mode provides a diagnostic view of the EM system itself (including sensor functionality and performance details).

Through an integrated interface of graphs, videos, and maps, FishVue Interpret Lite provides the tools to share key fishery information among staff and stakeholders.



Features	FishVue Interpret Lite	FishVue Interpret Pro
<i>View fishing activity with video footage</i>	✓	✓
<i>View equipment activity with sensor data</i>	✓	✓
<i>View vessel cruise track with GPS mapping</i>	✓	✓
<i>View skipper notes, and create viewer notes</i>	✓	✓
<i>View high-res footage from digital cameras</i>	✓	✓
<i>Clip and save data sets for further review</i>	✓	✓
<i>Evaluate EM system with technician mode</i>	✓	✓
<i>Create annotations to identify key events</i>		✓
<i>View annotations to review key events</i>		✓
<i>Edit, group, and sort annotations</i>		✓