



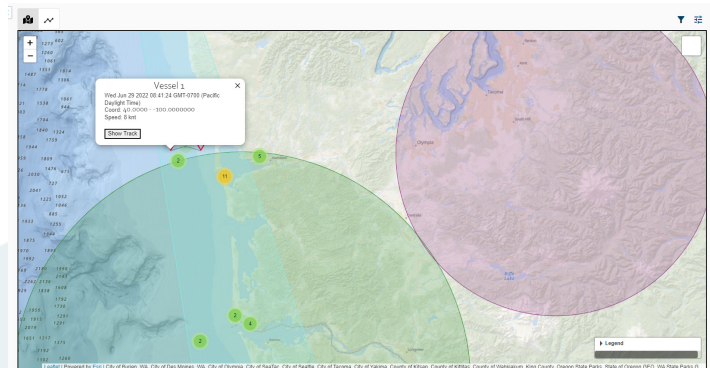
Product Overview

Fleet is a product for technical support users across agencies, industry, and service providers who need real-time data and messaging to monitor, regulate and practice fishing sustainably and profitably. Fleet allows its users to view current and historical fishing vessel activity updated in real-time so that users can make decisions and take action faster than ever before possible.

Product Features

Q1 2023

- Quickly locate the latest positions of your vessels by fleet or by individual vessel.
- View vessel track data to get more information about locations of fishing activity.
- Manage vessel membership in fleets or sub fleets to conveniently find and view vessels.
- Based on track and time of last reports, determine if the EM system is operational or if it needs additional troubleshooting.
- Access to timely data based on the latest EM system connection to the internet and available bandwidth
- Enforcement monitoring - watch for possible fishing activity in closed areas.
- Customer specific reports and summaries of vessel activities.



Product Features

Q4 2023

- User alerts based on vessel data and/or location.
- View graphs of data from vessels over time to help troubleshoot the EM system
- Request and view stills or video from a vessel subject to available connectivity and bandwidth
- Send messages to the vessel operator

